

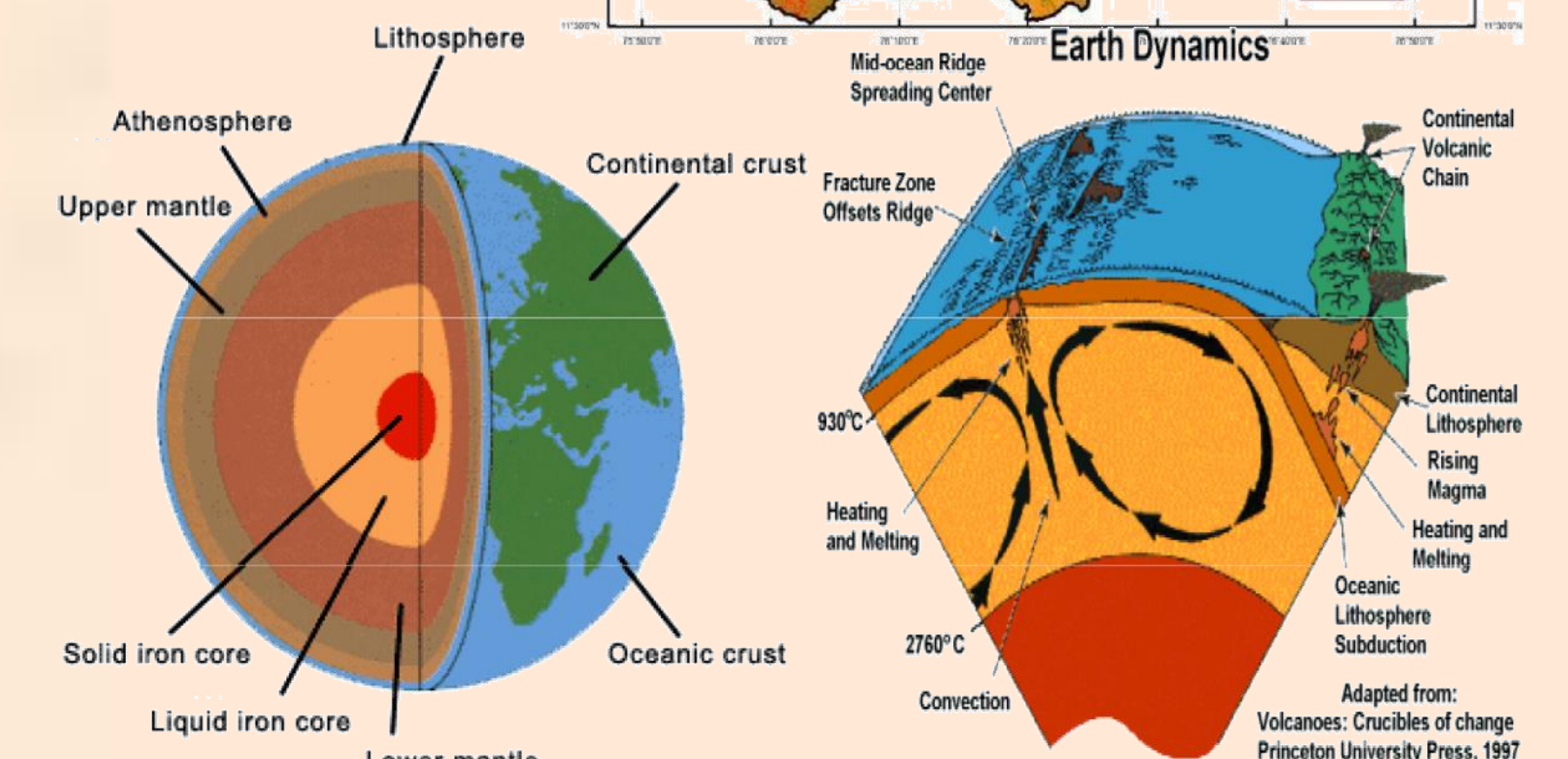
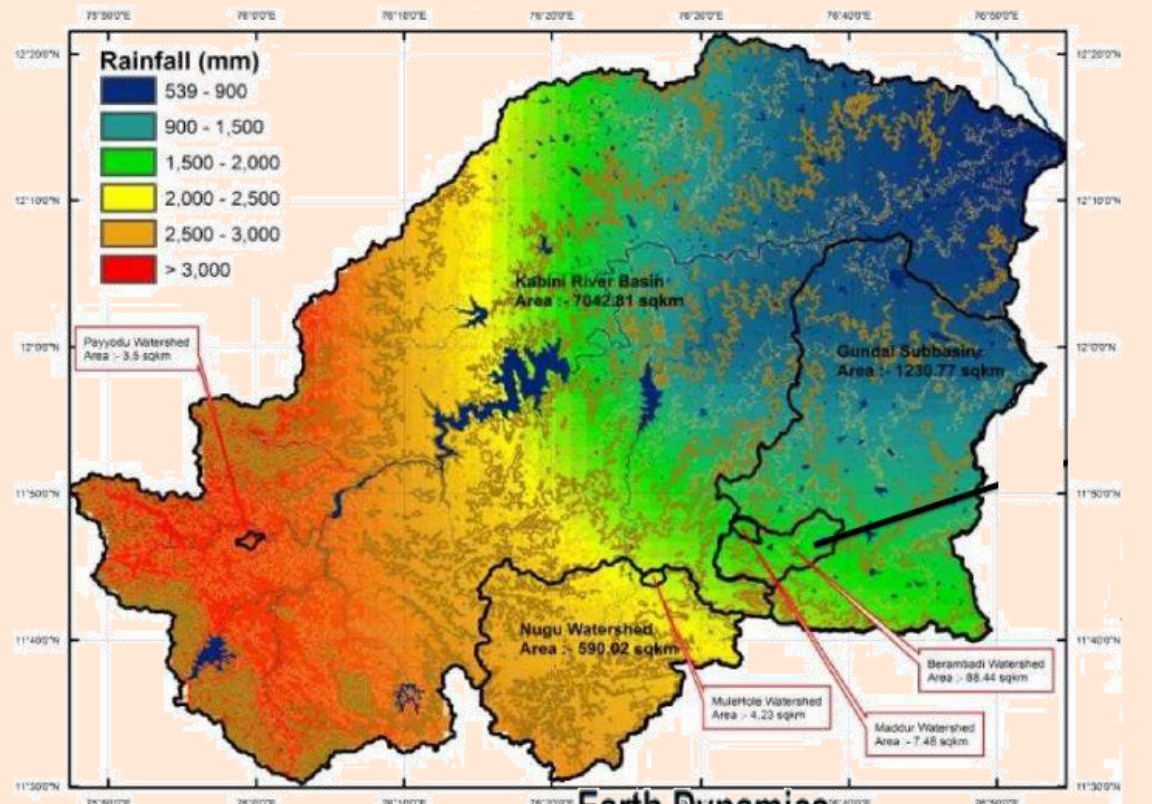
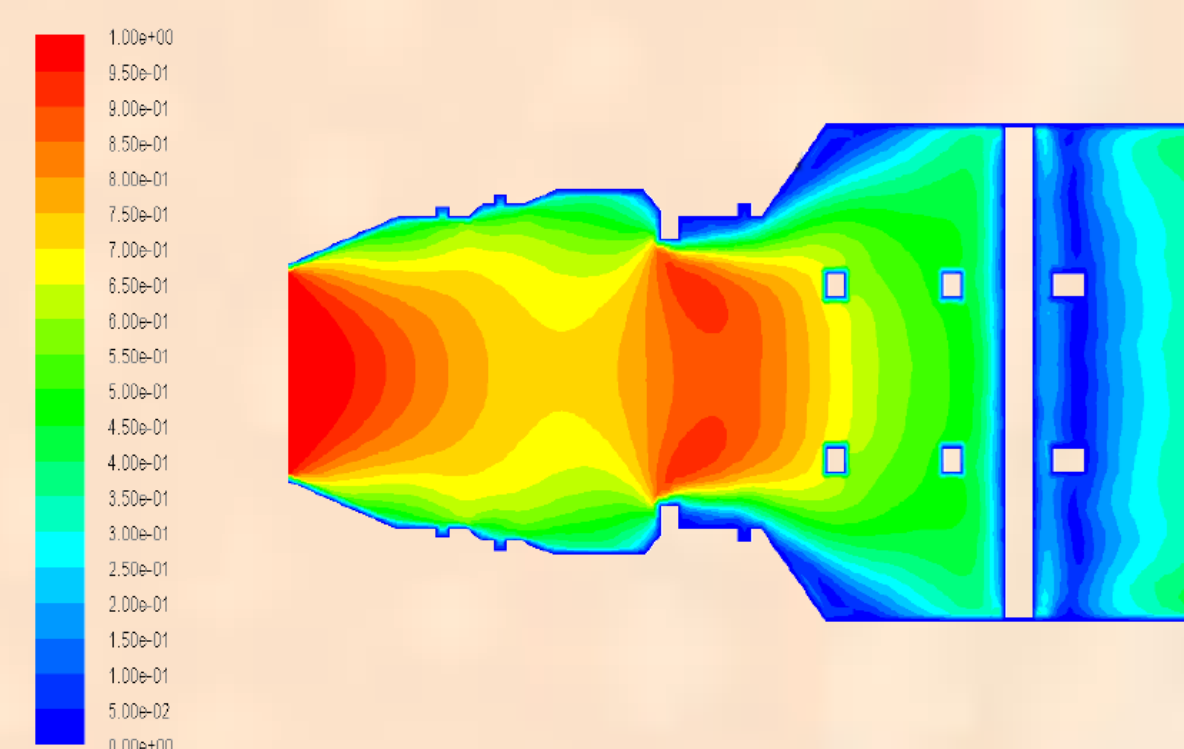


# OPEN DAY 2015

## DEPARTMENT OF CIVIL ENGINEERING

### Water Resources and Environmental Engineering

- Hydrological Modeling and Regionalization of Hydro-climatological Variables
- Groundwater Flow, Heat and Contaminant Transport Modeling
- Climate Change and Water Resources Management
- Agro-Hydrological Monitoring In AMBHAS Site
- Challenges in Microwave Remote Sensing
- Agro-Hydrology from Space



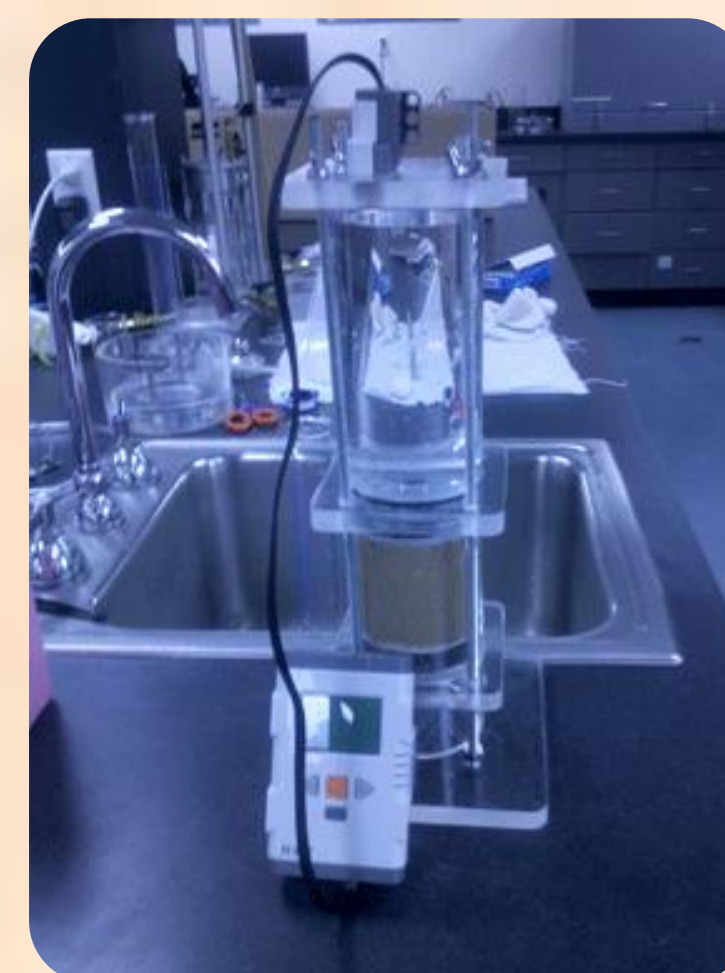
### Structural Engineering

- Utilization of non-organic wastes in making Construction products
- Experimental Investigations into Fatigue and Fracture Behavior
- Low carbon construction materials and technology
- Creep and Shrinkage Studies on concrete
- Computational Mechanics and Modeling
- Seismic (Shock Table Studies)



### Geotechnical Engineering

- Soil nailing/Geogrid experiment
- Permeability of Sand and Clay
- Liquefaction Experiment
- Clay charge experiment
- Clay swelling
- Magic soil



### Transportation Engineering

- Impacts Of High Speed Rail (HSR) For Policy Level Decisions
- Activity Based Travel Demand Modeling for Indian Cities
- Non Motorized Transport planning for Indian cities
- Modeling Land use allocation mitigating traffic
- Post disaster Traffic Management
- Driver Behavior Studies

